



Morris Road, Lewes

- Victorian Home
- Popular Cliffe Area
- Modernised and extended
- Landscaped rear courtyard garden
- Three bedrooms
- Open plan sitting / dining
- Extended kitchen



Front Door

Lobby

Open Plan Sitting / Dining

Kitchen / Breakfast Room

1st Floor landing

Bedroom 1

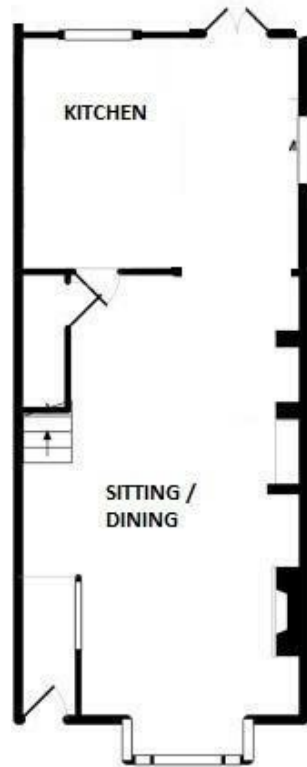
Bedroom 2

Bathroom

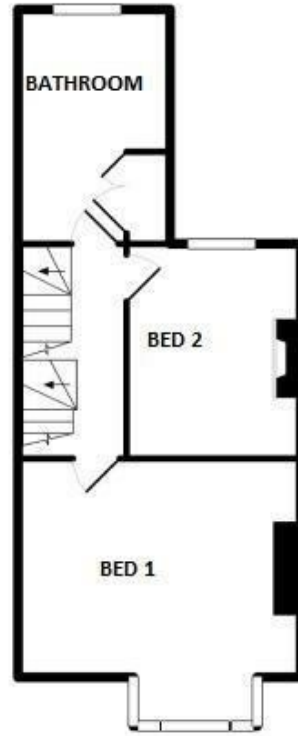
2nd Floor Bedroom 3

Gardens



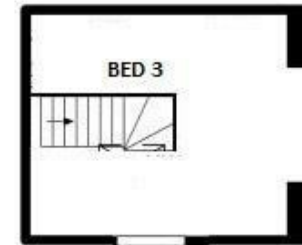


GROUND FLOOR
APPROX. FLOOR
AREA 550 SQ.FT.



1ST FLOOR
APPROX. FLOOR
AREA 401 SQ.FT.
(37.3 SQ.M.)

TOTAL APPROX. FLOOR AREA 1170 sq ft



2ND FLOOR
APPROX. FLOOR
AREA 158 SQ.FT.
(14.7 SQ.M.)



t: 01273 477377

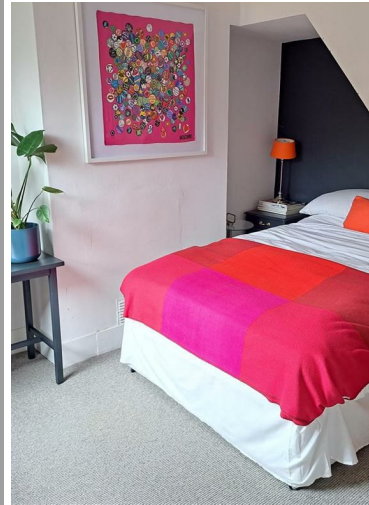
e: sales@lewesestates.co.uk

Every care is taken in preparing our sales particulars and they are usually verified by the vendor. We do not guarantee appliances, electrical fittings, plumbing, etc; you must satisfy yourself that they operate correctly. Room sizes are approximate. Please do not use them to buy carpets or furniture. We cannot verify the tenure as we do not have access to the legal title. We cannot guarantee boundaries or rights of way. You must take advice of your legal representative.

A beautifully presented Victorian terraced home located in popular Morris Road. The property has been thoughtfully extended and modernised by the current owner . The ground floor offers an open plan sitting / dining room with fireplace and lots of clever in-built storage. The kitchen has been extended to the full width of the house and open up into the rear garden.

On the first floor you will find two double bedrooms and a well fitted bathroom with bath and separate shower cubicle. Stairs ascend to the 2nd floor bedroom 3. Great views with a large Velux window.

The rear garden is designed to be quite low maintenance with paved areas and raised flower beds.





**Lewes
Estates**

52 High Street, Lewes, East Sussex, BN7 1XE t: 01273 477377 e: sales@lewesestates.co.uk www.lewesestates.co.uk